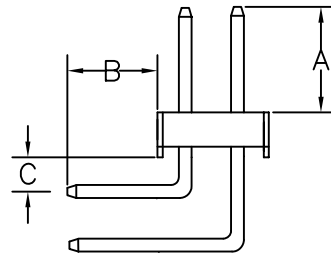
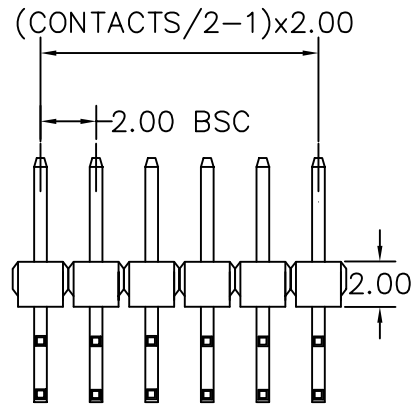


RECOMMENDED P.C.B LAYOUT



A: 4.00 mm B: 2.80 mm C: 1.00 mm

| CONTACTS | 2X21 |
|----------|------|
| 2X2 | 2X22 |
| 2X3 | 2X23 |
| 2X4 | 2X24 |
| 2X5 | 2X25 |
| 2X6 | 2X26 |
| 2X7 | 2X27 |
| 2X8 | 2X28 |
| 2X9 | 2X29 |
| 2X10 | 2X30 |
| 2X11 | 2X31 |
| 2X12 | 2X32 |
| 2X13 | 2X33 |
| 2X14 | 2X34 |
| 2X15 | 2X35 |
| 2X16 | 2X36 |
| 2X17 | 2X37 |
| 2X18 | 2X38 |
| 2X19 | 2X39 |
| 2X20 | 2X40 |

MATERIAL
HOUSING : THERMOPLASTIC UL94V-0
CONTACT : COPPER ALLOYS

SPECIFICATION
CURRENT: 1A
OPERATING TEMPERATURE: -55°C TO +105°C
CONTACT RESISTANCE : 20 MILLIOHMS MAX
INSULATION RESISTANCE : 5000 MEGAOHMS MIN
DIELECTRIC STRENGTH : 1000 VAC MIN

M-R-2Xxx-LF
LEADFREE
2X02:04WAY
2X40:80WAY
RoHS Compliant

MORETHANALL
CONNECTORS
ASSEMBLIES

PART NO. M-R-2Xxx

DWG NO. M-R-2Xxx

FILE NO.

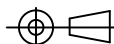
UNIT / mm

SCALE 1:1

CHECKED BY CY

DRAWING BY

PROJECTION



TOLERANCES ARE

.X ± 0.38

.XX ± 0.25

.XXX ±

ANG

DESCRIPTION:

AREA

REVISIONS

HK

DATE

焯倫股份有限公司