

SPECIFICATIONS

Electrical

Current Rating: 5A AC, DC

Voltage Rating: 250V AC, DC

Operating Temp.: -25°C ~ +85°C

Insulation Resistance: 1000MΩ/ min.

Dielectric Withstanding Voltage: 1500V AC/ min.

Contact Resistance: 10mΩ/ max.

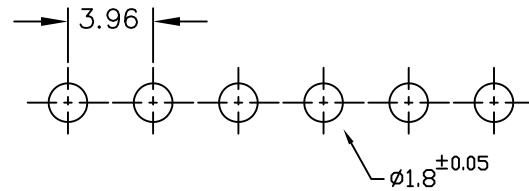
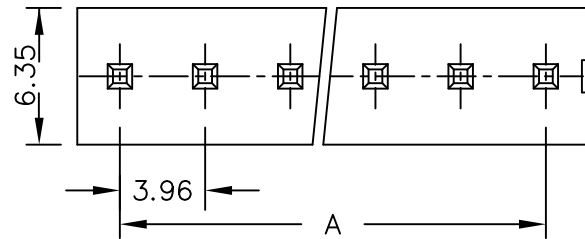
Material

Material: Nylon66, UL94V-2

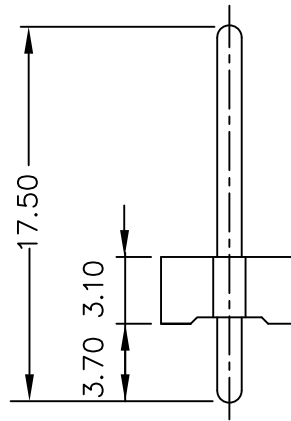
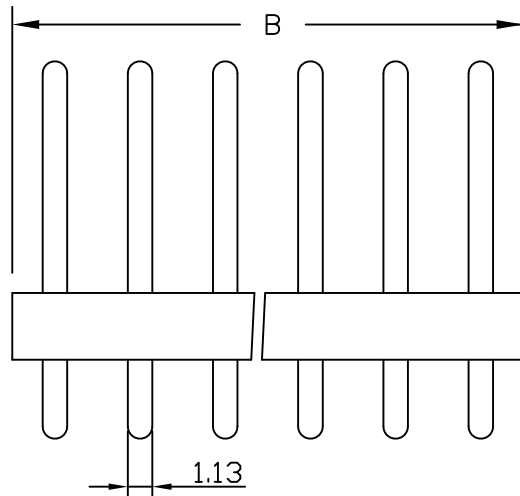
KXR-D-xx-LF
LEADFREE
02~16WAY

RoHS Compliant

Poles	Dimension mm (in.)		Part No.	Note.
	A	B		
2	3.96	8.00	KXR-D-02	
3	7.92	12.00	KXR-D-03	
4	11.88	15.90	KXR-D-04	
5	15.84	20.00	KXR-D-05	
6	19.80	24.00	KXR-D-06	
7	23.76	27.90	KXR-D-07	
8	27.72	31.90	KXR-D-08	
9	31.68	35.80	KXR-D-09	
10	35.64	39.90	KXR-D-10	
11	39.60	43.90	KXR-D-11	
12	43.56	47.70	KXR-D-12	
13	47.52	51.80	KXR-D-13	
14	51.48	55.70	KXR-D-14	
15	55.44	59.70	KXR-D-15	
16	59.40	63.80	KXR-D-16	



PCB LAYOUT COMPONENT SIDE



MORETHANALL
CONNECTORS
ASSEMBLIES

煜倫股份有限公司

PART NO. KXR-D-xx		CHECKED BY CY	TOLERANCES ARE .X ± 0.2 .XX ± .XXX ± AWG	DESCRIP TION: 3.96mm Wire-to-Board Header Dip 180° Type
DWG NO. KXR-D-xx				
FILE NO.		DRAWING BY		
UNIT / mm	SCALE 1:1	PROJECTION	AREA	REVISIONS
			HK	DATE