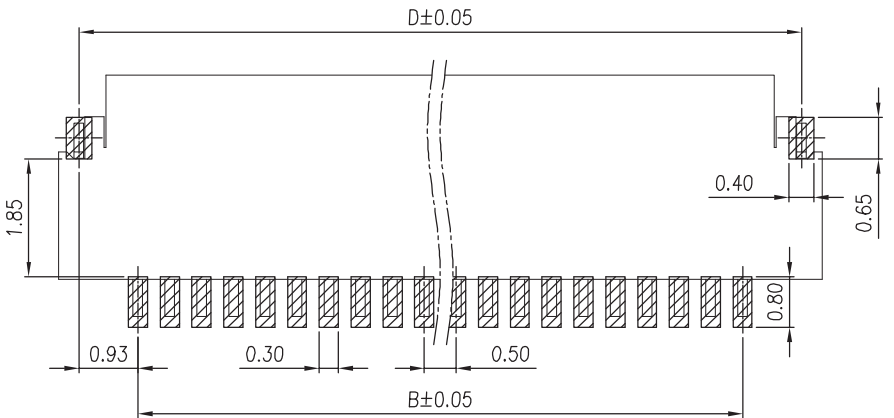
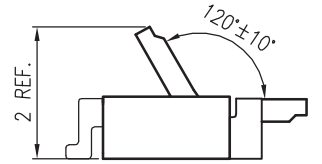
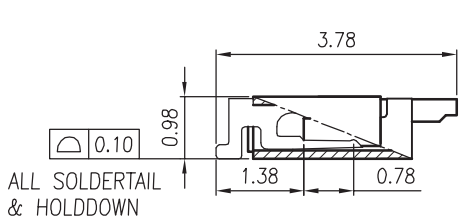
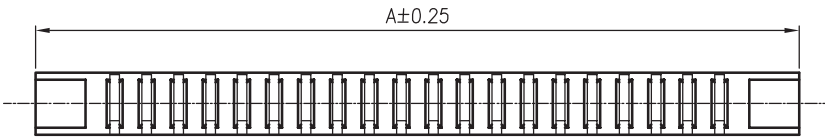
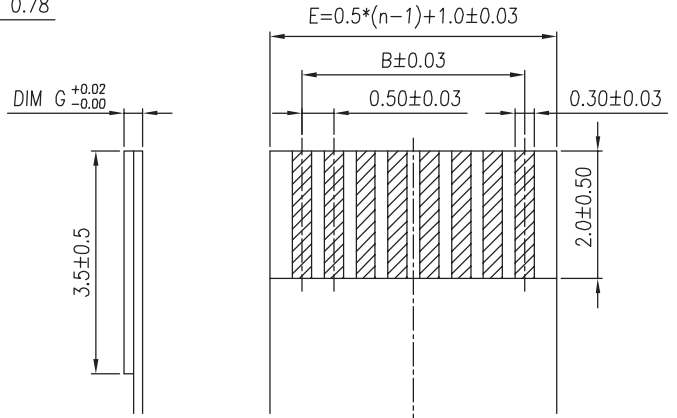


**■ MATERIALS:**  
 HOUSING: HIGH-TEMP, UL94V-0, COLOR: NATURAL.  
 COVER: HIGH-TEMP, UL94V-0, COLOR: SEE TABLE  
 CONTACT: COPPER ALLOY.  
 HOLDDOWN: COPPER ALLOY.

FPV-WHB09xxx-xx-LF  
 LEADFREE  
 BLANK:TIN PLATE  
 G:GOLD PLATE  
 BLANK:0.3mm FPC CABLE  
 F2-0.2mm FPC CABLE  
 RoHS Compliant



**RECOMMENDED PCB LAYOUT**  
 Tolerance: ±0.05



**Applicable FPC/FFC  
 recommended dimension**

TABLE	
DIM G	COLOR
0.30	BLACK
0.20	NATURAL

**MORETHANALL**  
 CONNECTORS  
 ASSEMBLIES

PART NO. FPV-WHB09xxx-xx

DWG NO. FPV-WHB09xxx-xx

CHECKED BY CY

TOLERANCES ARE

DESCRIP TION:

FFC/FPC 0.5 PITCH CONNECTOR,  
ZIF SMT TYPE , BODY HIGH 0.9mm.

FILE NO.

DRAWING BY

.X ± 0.2  
.XX ±  
.XXX ±  
AWG

AREA

REVISIONS

HK

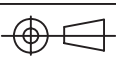
DATE

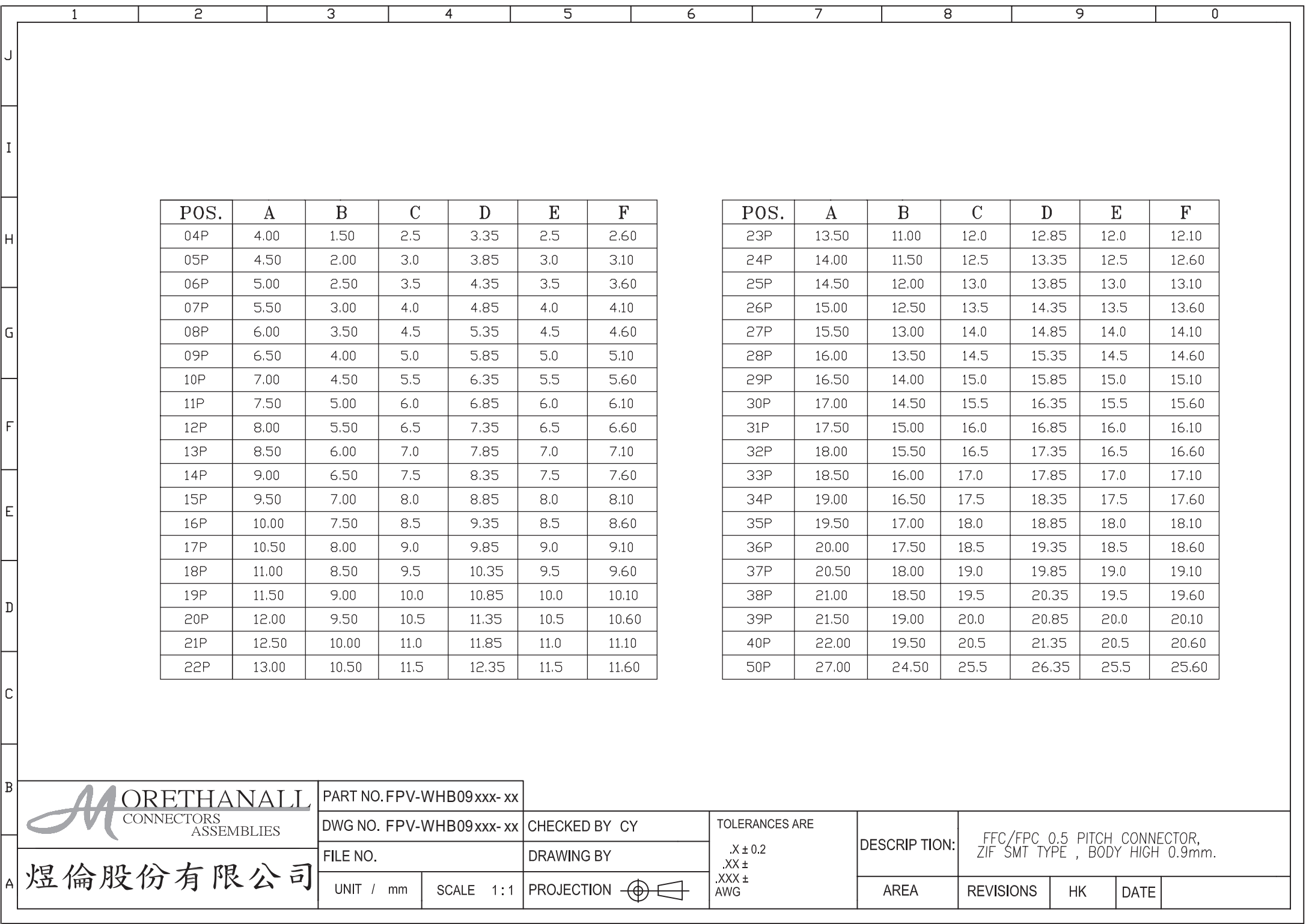
煜倫股份有限公司

UNIT / mm

SCALE 1:1



PROJECTION





POS.	A	B	C	D	E	F
04P	4.00	1.50	2.5	3.35	2.5	2.60
05P	4.50	2.00	3.0	3.85	3.0	3.10
06P	5.00	2.50	3.5	4.35	3.5	3.60
07P	5.50	3.00	4.0	4.85	4.0	4.10
08P	6.00	3.50	4.5	5.35	4.5	4.60
09P	6.50	4.00	5.0	5.85	5.0	5.10
10P	7.00	4.50	5.5	6.35	5.5	5.60
11P	7.50	5.00	6.0	6.85	6.0	6.10
12P	8.00	5.50	6.5	7.35	6.5	6.60
13P	8.50	6.00	7.0	7.85	7.0	7.10
14P	9.00	6.50	7.5	8.35	7.5	7.60
15P	9.50	7.00	8.0	8.85	8.0	8.10
16P	10.00	7.50	8.5	9.35	8.5	8.60
17P	10.50	8.00	9.0	9.85	9.0	9.10
18P	11.00	8.50	9.5	10.35	9.5	9.60
19P	11.50	9.00	10.0	10.85	10.0	10.10
20P	12.00	9.50	10.5	11.35	10.5	10.60
21P	12.50	10.00	11.0	11.85	11.0	11.10
22P	13.00	10.50	11.5	12.35	11.5	11.60

POS.	A	B	C	D	E	F
23P	13.50	11.00	12.0	12.85	12.0	12.10
24P	14.00	11.50	12.5	13.35	12.5	12.60
25P	14.50	12.00	13.0	13.85	13.0	13.10
26P	15.00	12.50	13.5	14.35	13.5	13.60
27P	15.50	13.00	14.0	14.85	14.0	14.10
28P	16.00	13.50	14.5	15.35	14.5	14.60
29P	16.50	14.00	15.0	15.85	15.0	15.10
30P	17.00	14.50	15.5	16.35	15.5	15.60
31P	17.50	15.00	16.0	16.85	16.0	16.10
32P	18.00	15.50	16.5	17.35	16.5	16.60
33P	18.50	16.00	17.0	17.85	17.0	17.10
34P	19.00	16.50	17.5	18.35	17.5	17.60
35P	19.50	17.00	18.0	18.85	18.0	18.10
36P	20.00	17.50	18.5	19.35	18.5	18.60
37P	20.50	18.00	19.0	19.85	19.0	19.10
38P	21.00	18.50	19.5	20.35	19.5	19.60
39P	21.50	19.00	20.0	20.85	20.0	20.10
40P	22.00	19.50	20.5	21.35	20.5	20.60
50P	27.00	24.50	25.5	26.35	25.5	25.60

	PART NO. FPV-WHB09xxx-xx		CHECKED BY CY	TOLERANCES ARE .X ± 0.2 .XX ± .XXX ± AWG	DESCRIP TION: FFC/FPC 0.5 PITCH CONNECTOR, ZIF SMT TYPE , BODY HIGH 0.9mm.		
	DWG NO. FPV-WHB09xxx-xx					DRAWING BY	
焯倫股份有限公司	FILE NO.		PROJECTION 	AREA	REVISIONS	HK	DATE
	UNIT / mm	SCALE 1:1					